

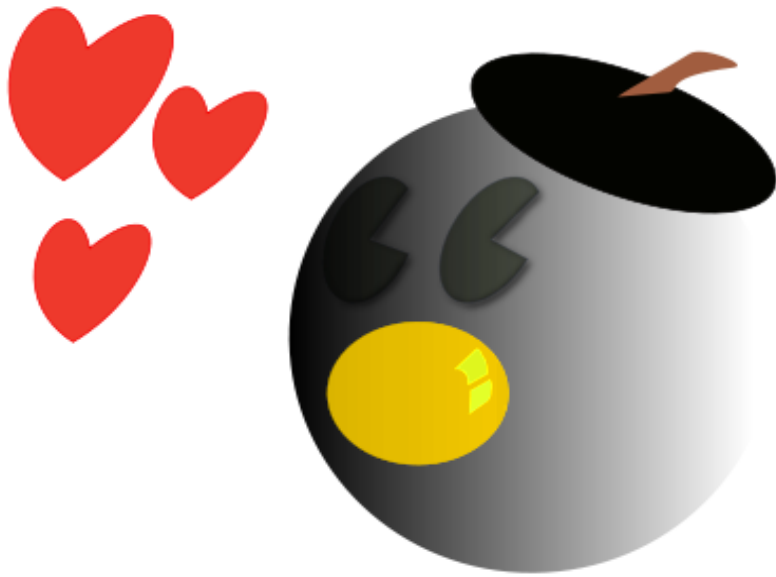
Can you be a French art critic?

"Biensûr!"



"Ahh oui!"

'Pas de problèmes!'



Cette peinture...

...a les couleurs foncées

...a les couleurs claires

J'aime la peinture!

Je n'aime pas ça! ☹

J'aime le style

J'aime ça! ☺

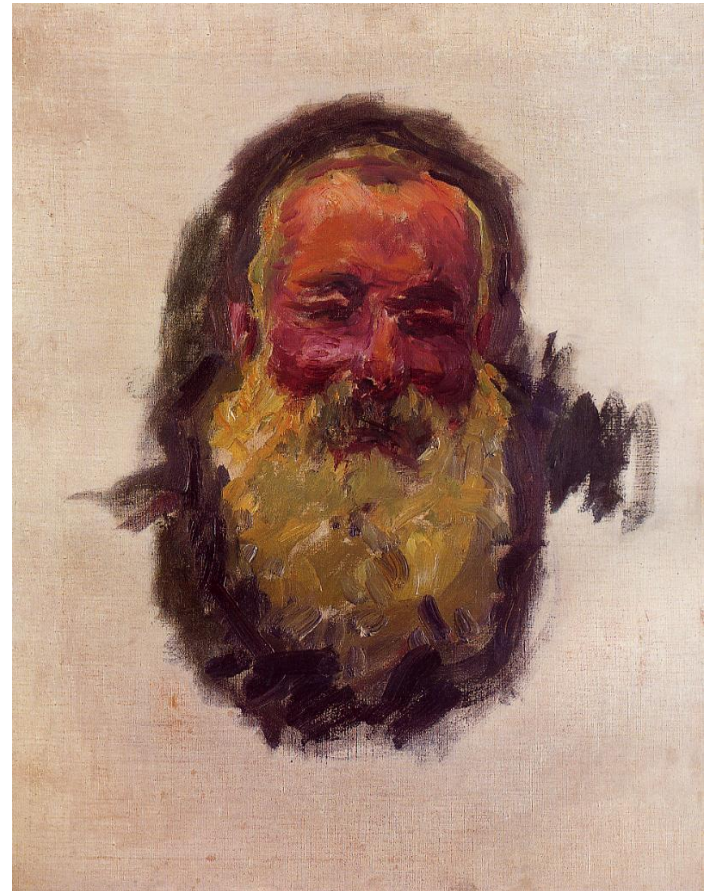
L'IMPRESSIONNISME

Monet

1886



1917



Claude Monet 1840-1926



Les couleurs

Monet was fascinated by light, colour and nature. He became a leader of a group of artists known as Impressionists.

Monet did much of his painting out-of-doors trying to catch the effects of daylight on objects.

Many of his most beautiful paintings show places in the garden that he created for himself and his wife.

Impressionism is a style of painting that focuses on the effects of light and atmosphere on colours and forms.

Impressionist artists often used broken brush strokes rather than smooth and unnoticeable ones and also used many colours to paint scenes of every day life.

Many of Impressionist artists would begin their paintings out-of-doors as Monet had done.

La cathédrale de Rouen par Monet.



lumière



claire

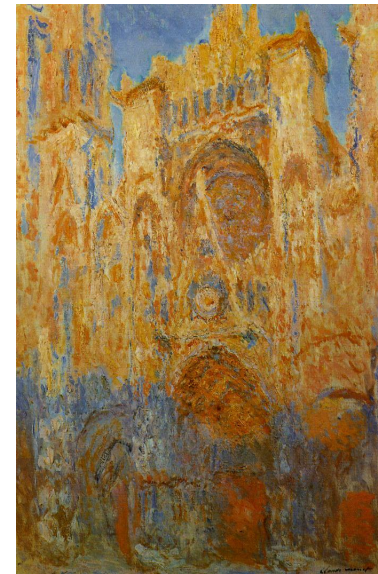
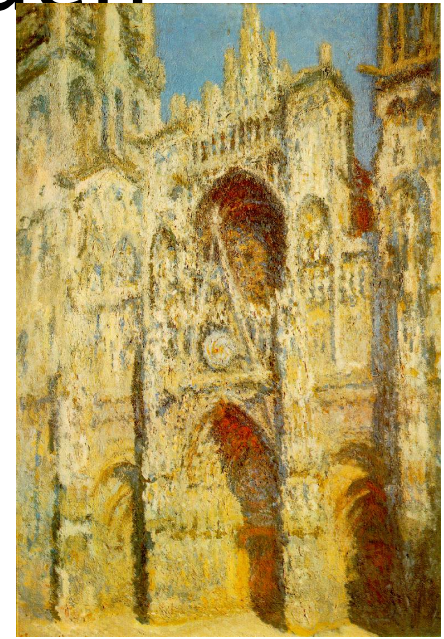


moyenne



foncée

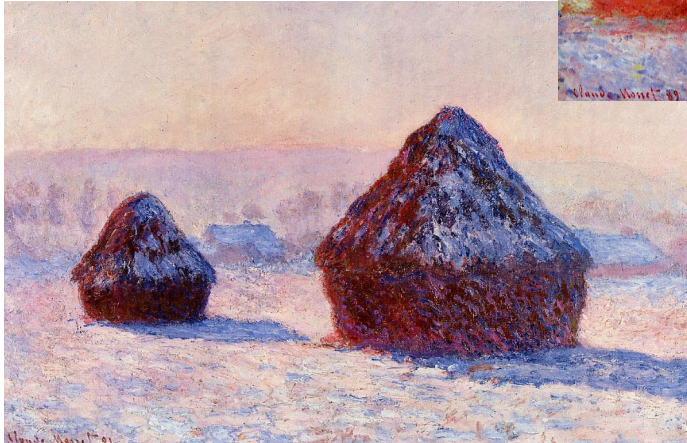
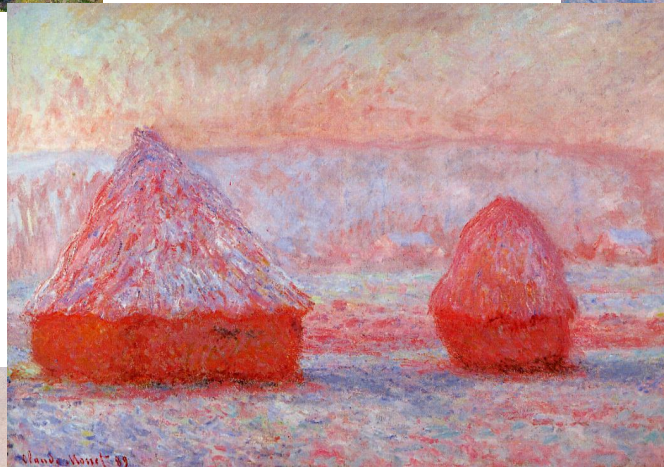
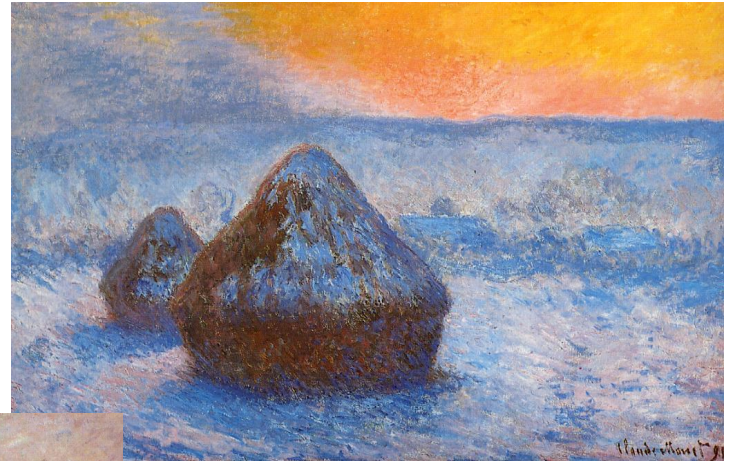
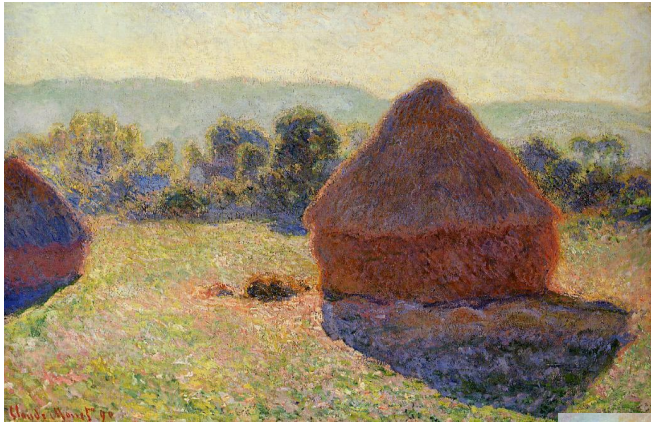
La Cathédrale de Rouen



La Gare Saint Lazare

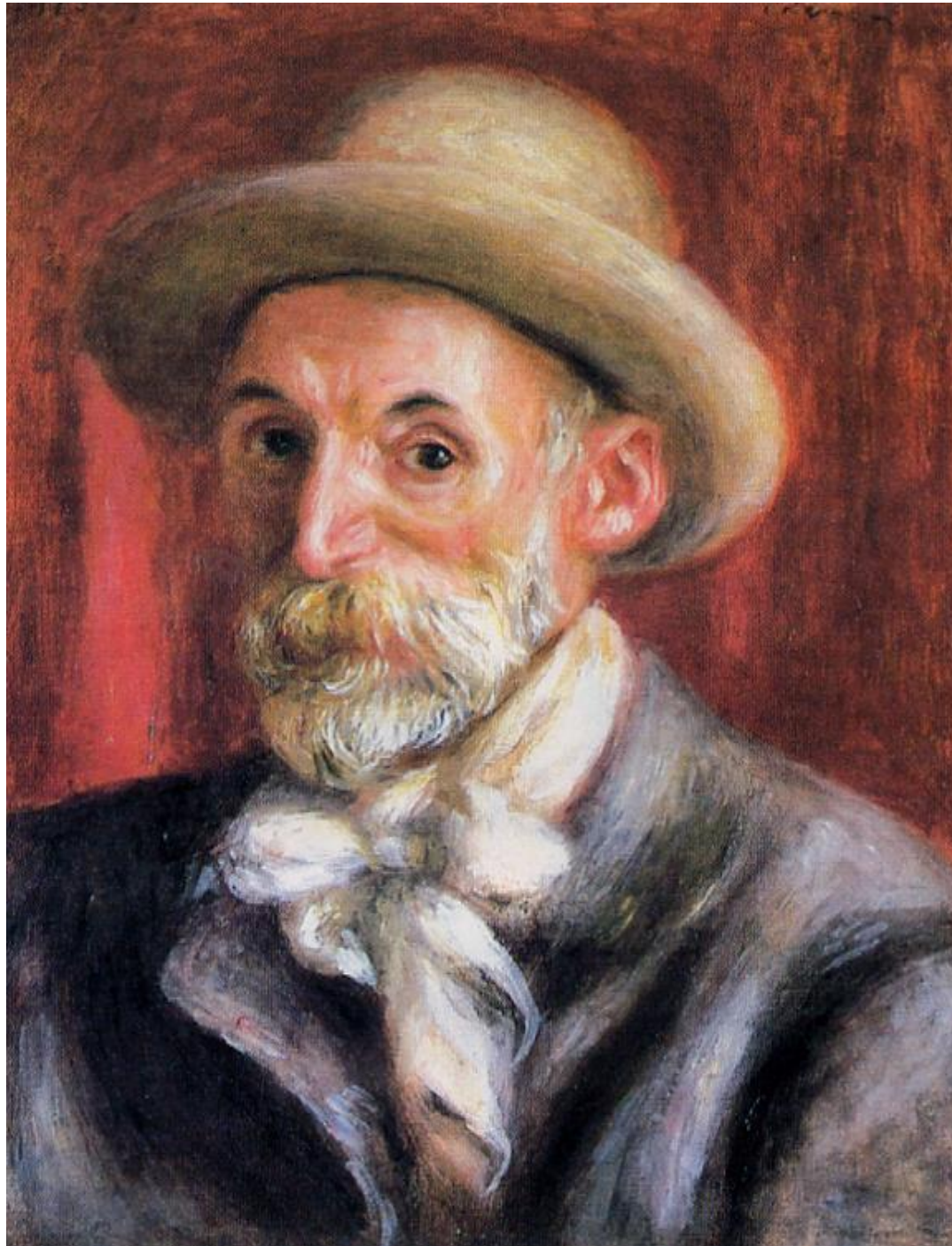


Meules de foin





R
E
N
O
I
R



1841-1919

Pierre-Auguste Renoir 1841-1919



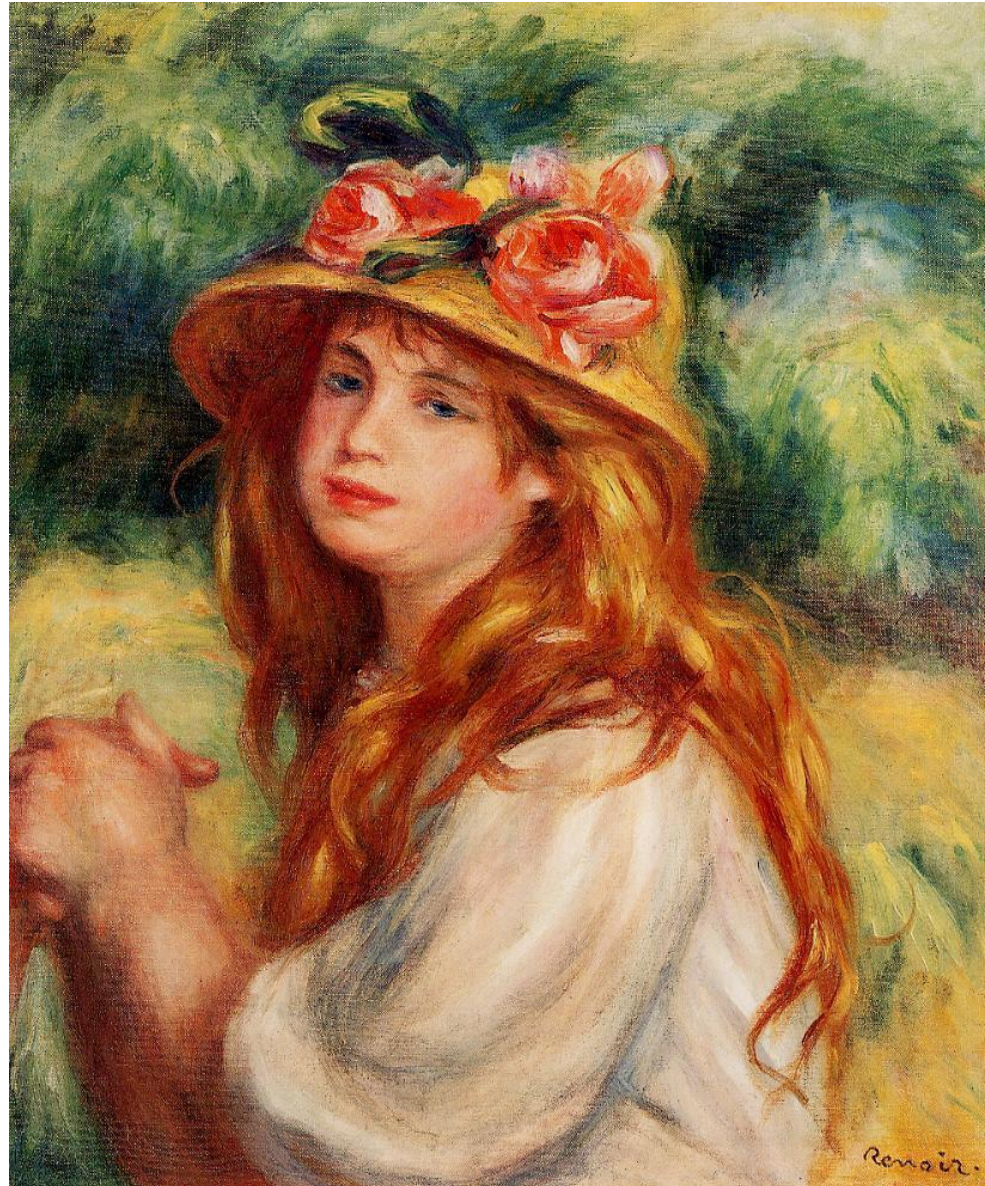
Les gens







RENOIR



RENOIR

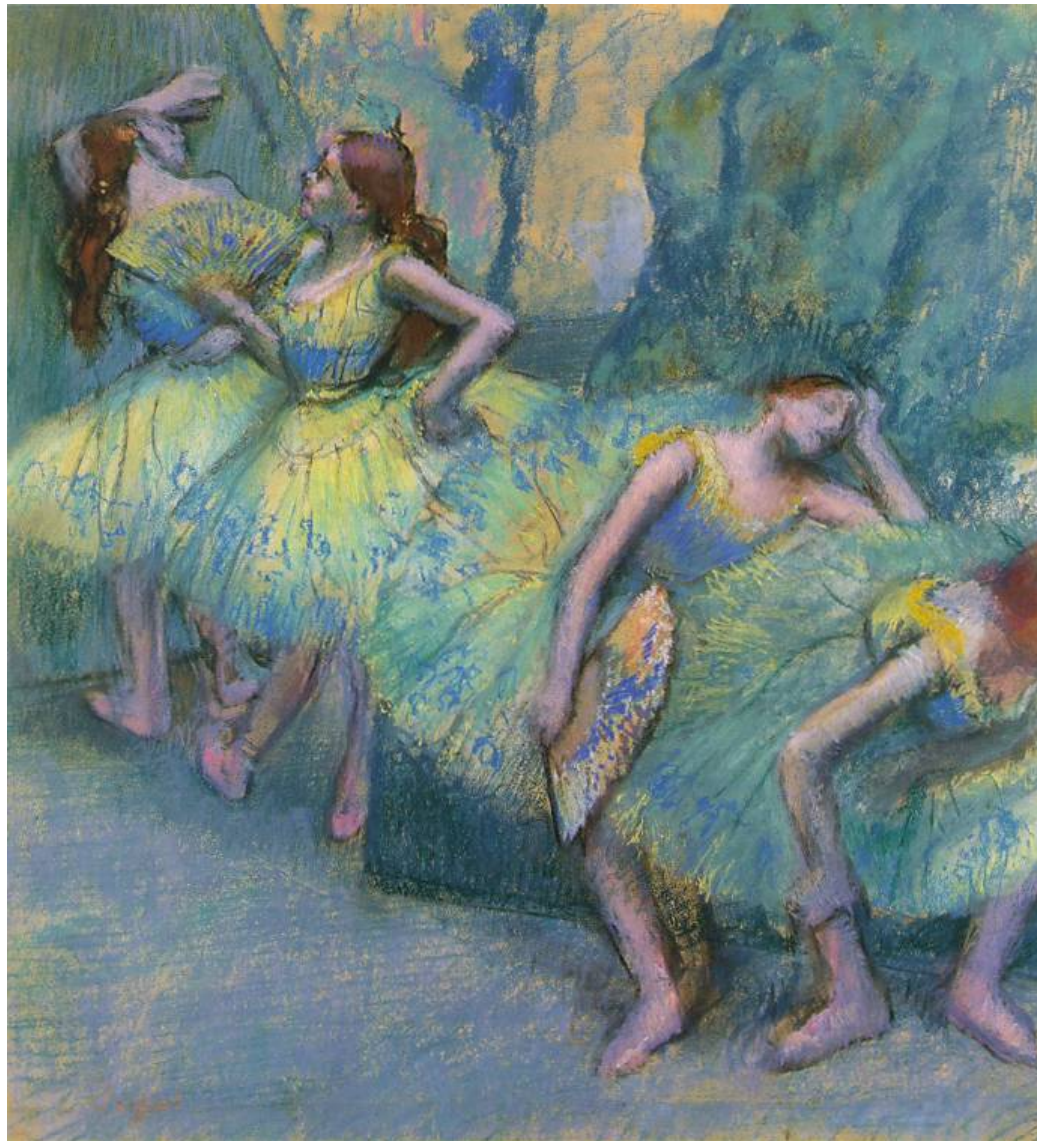


Edgar Degas 1834-1917

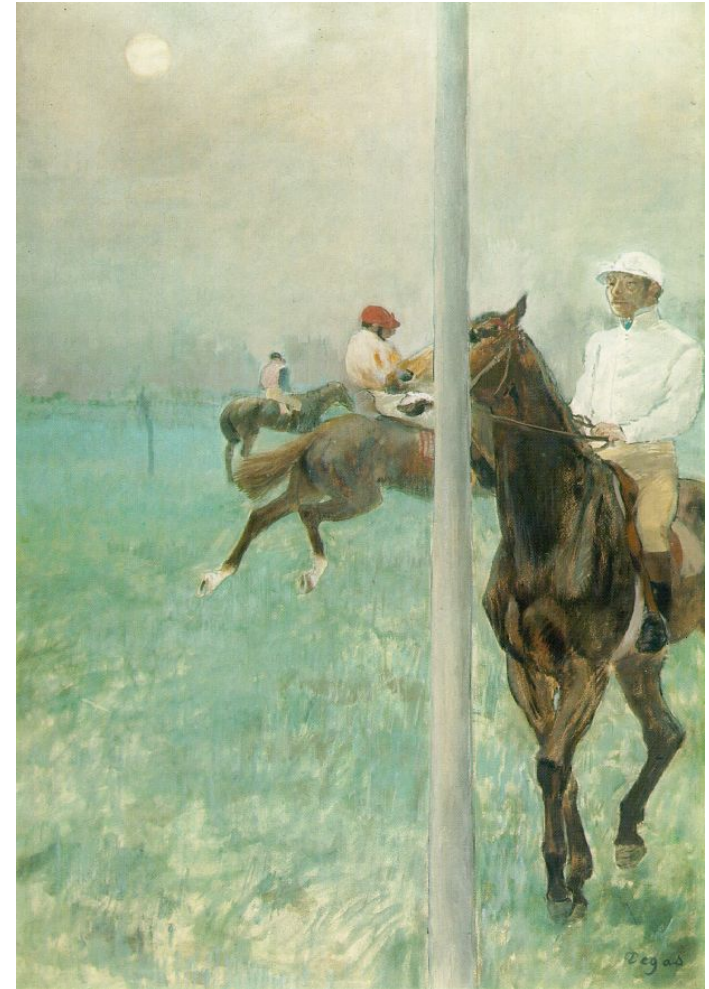


Degas

Quelqu'un qui danse





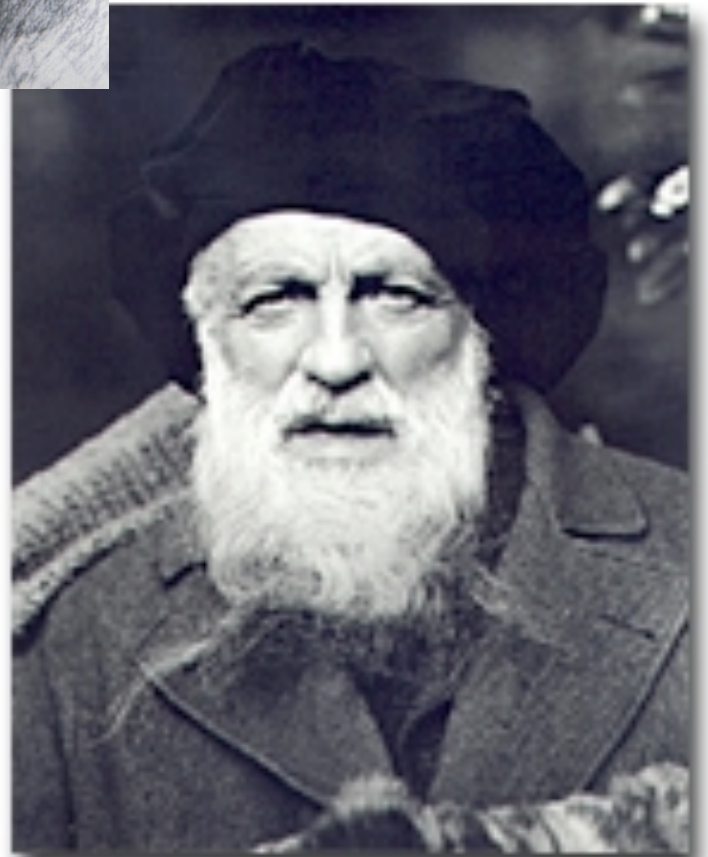


DEGAS



Auguste Rodin

1840-1917



Le Penseur



Le Baiser



La Cathédrale



La Main de Dieu



L'Hôtel Biron

Le Musée Rodin à Paris



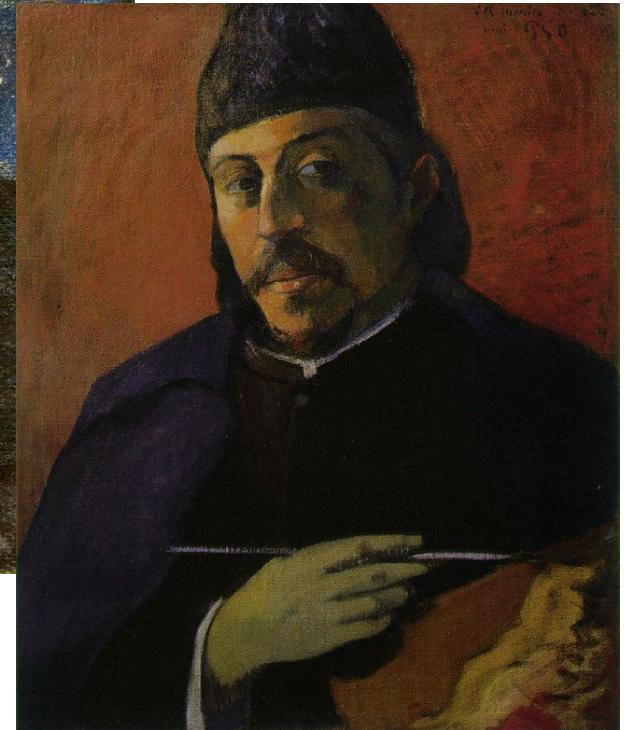
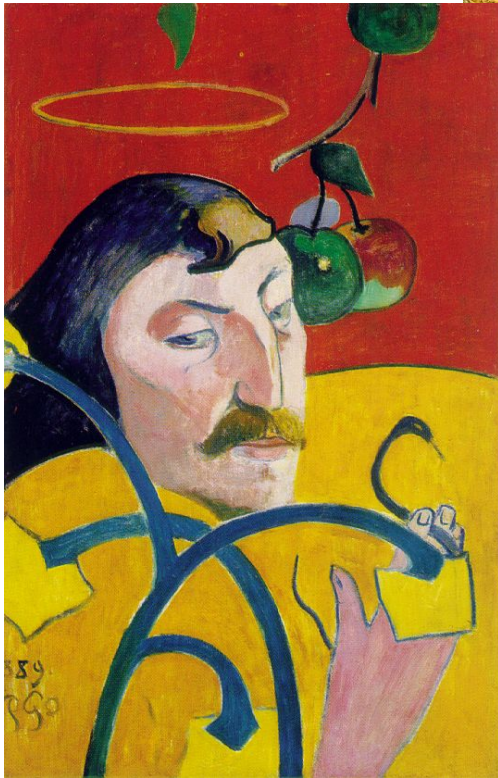
Dans le jardin du musée



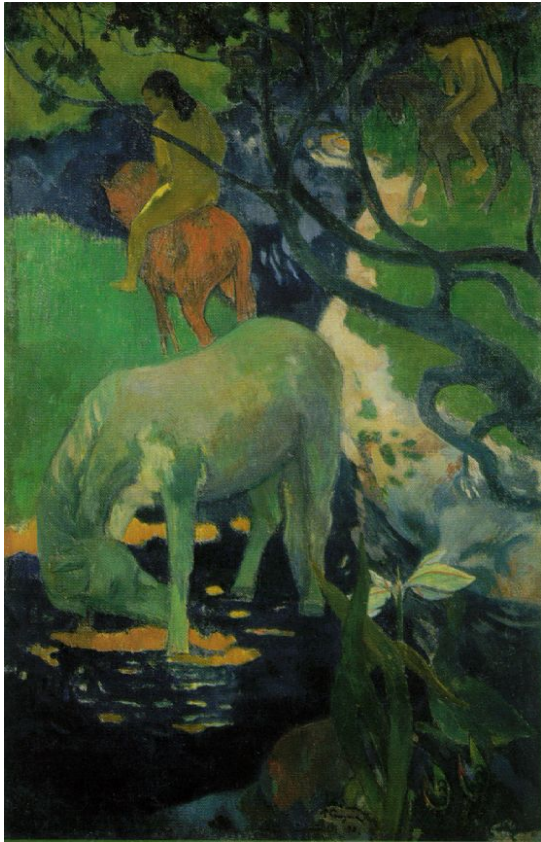
Balzac



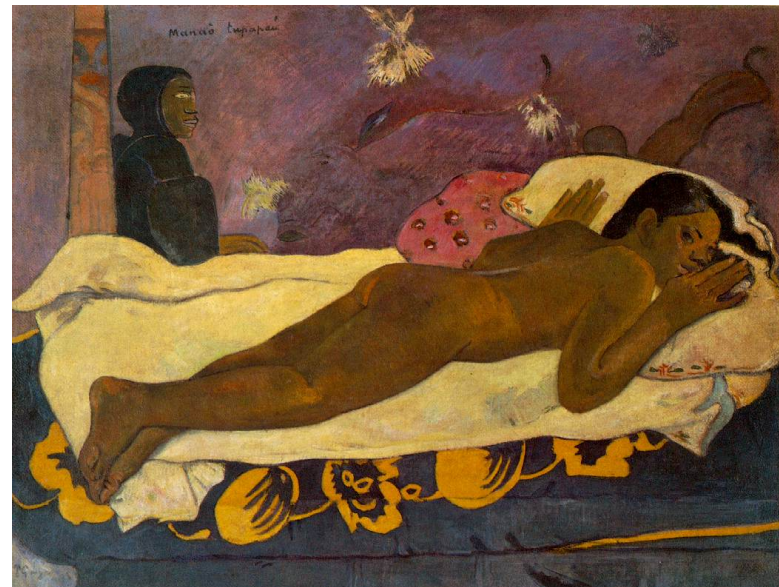


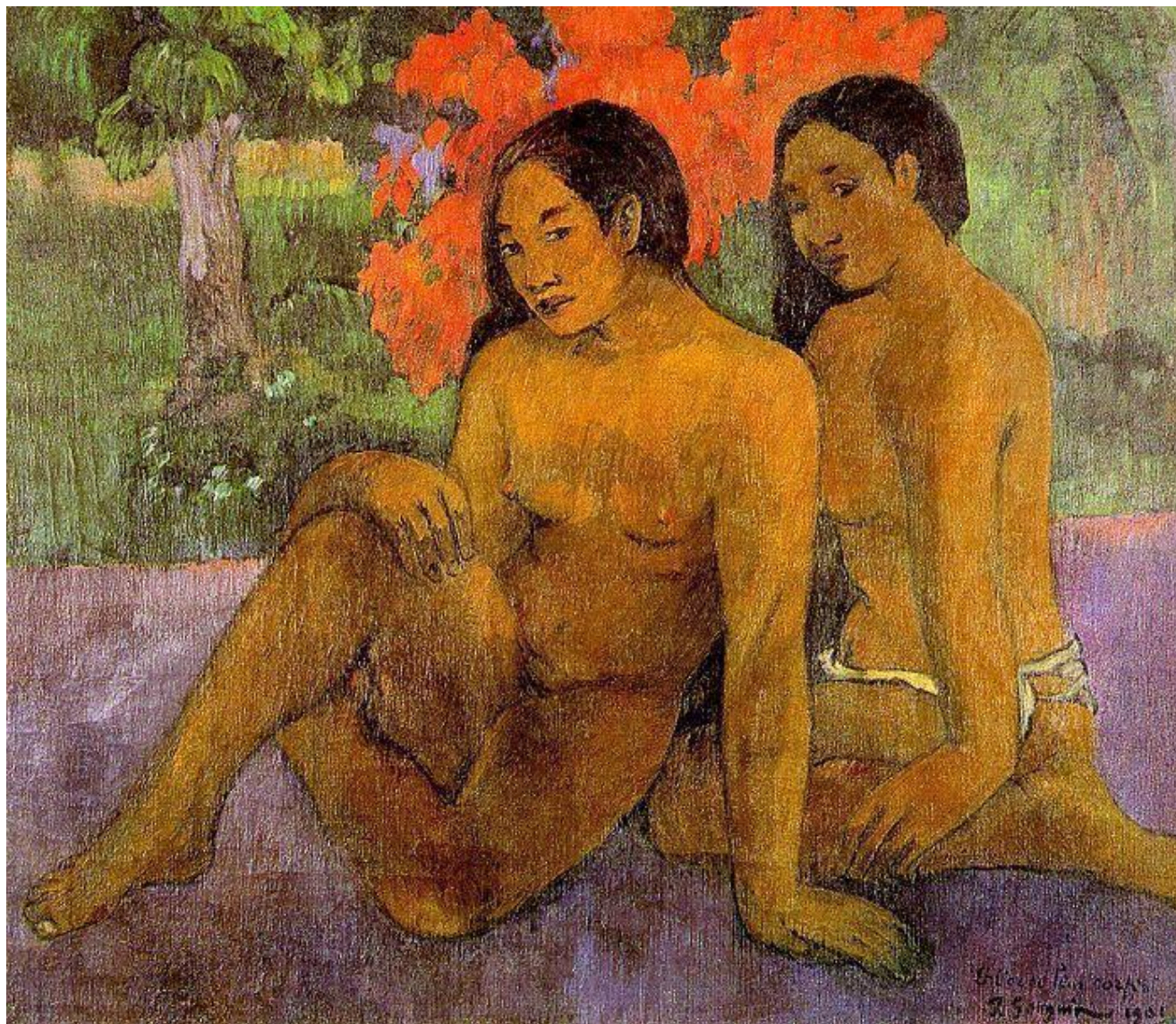


Paul Gauguin

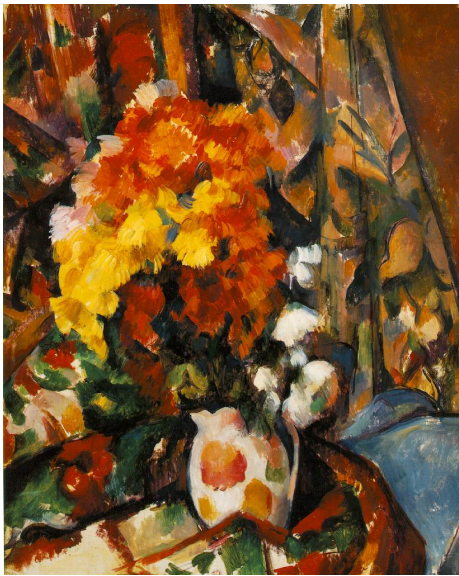
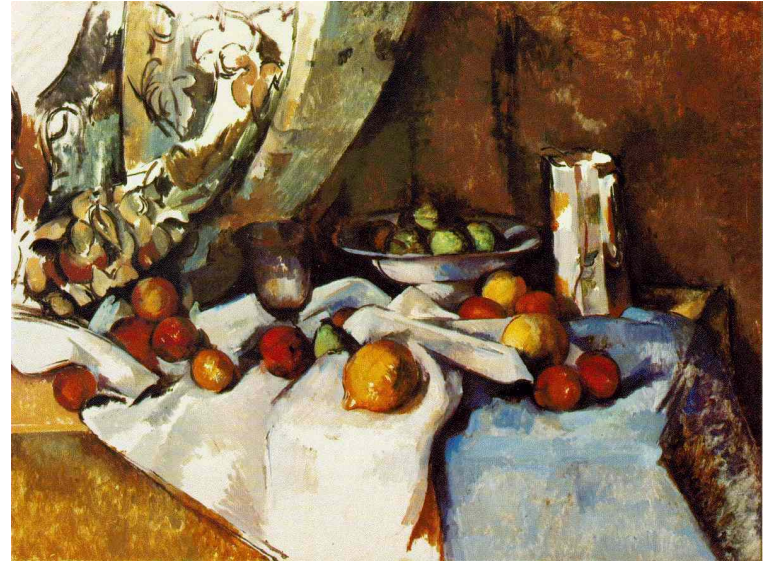
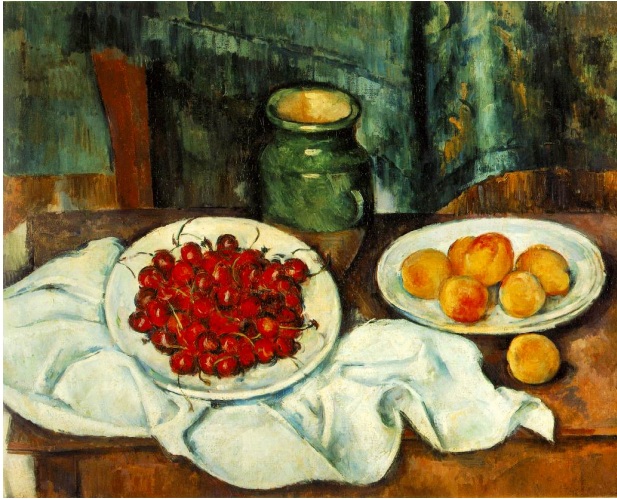


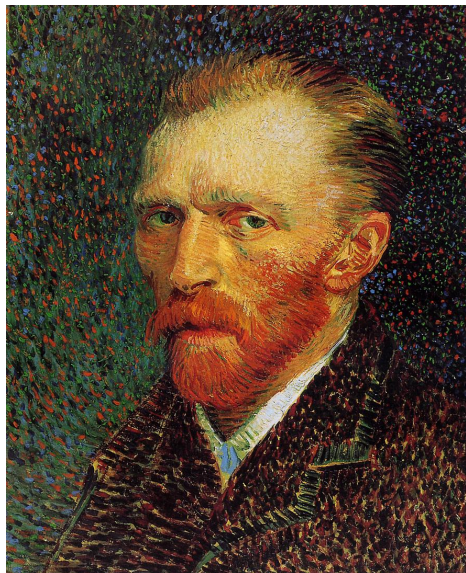
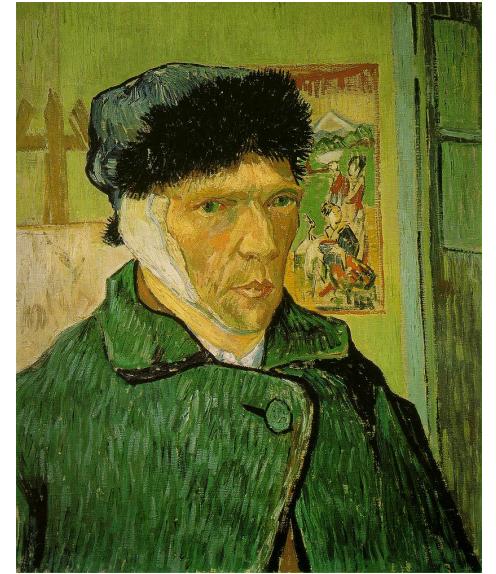
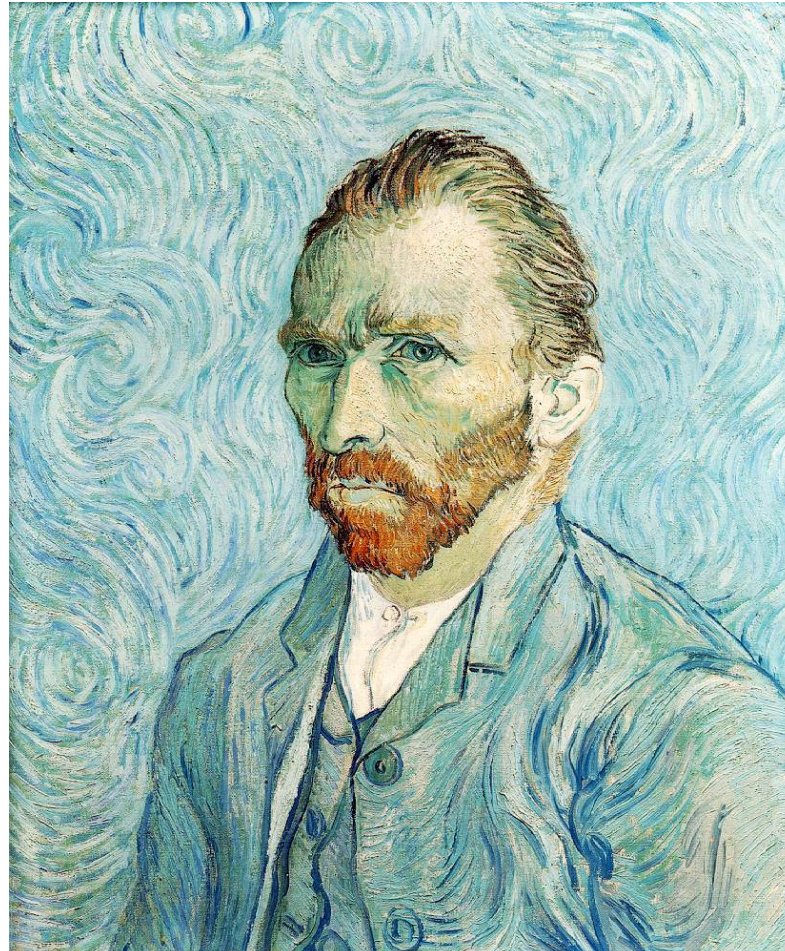
Gauguin à Tahiti



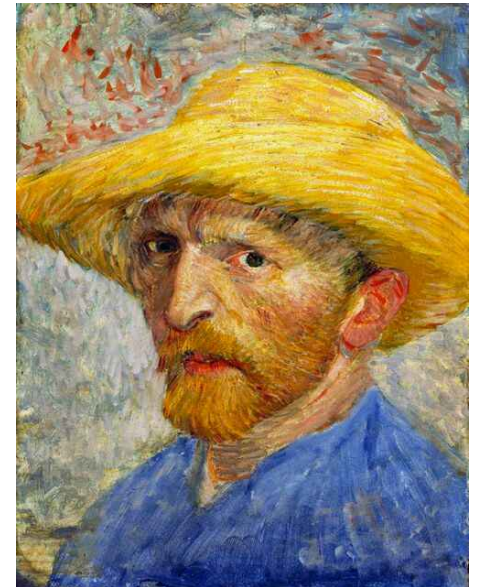


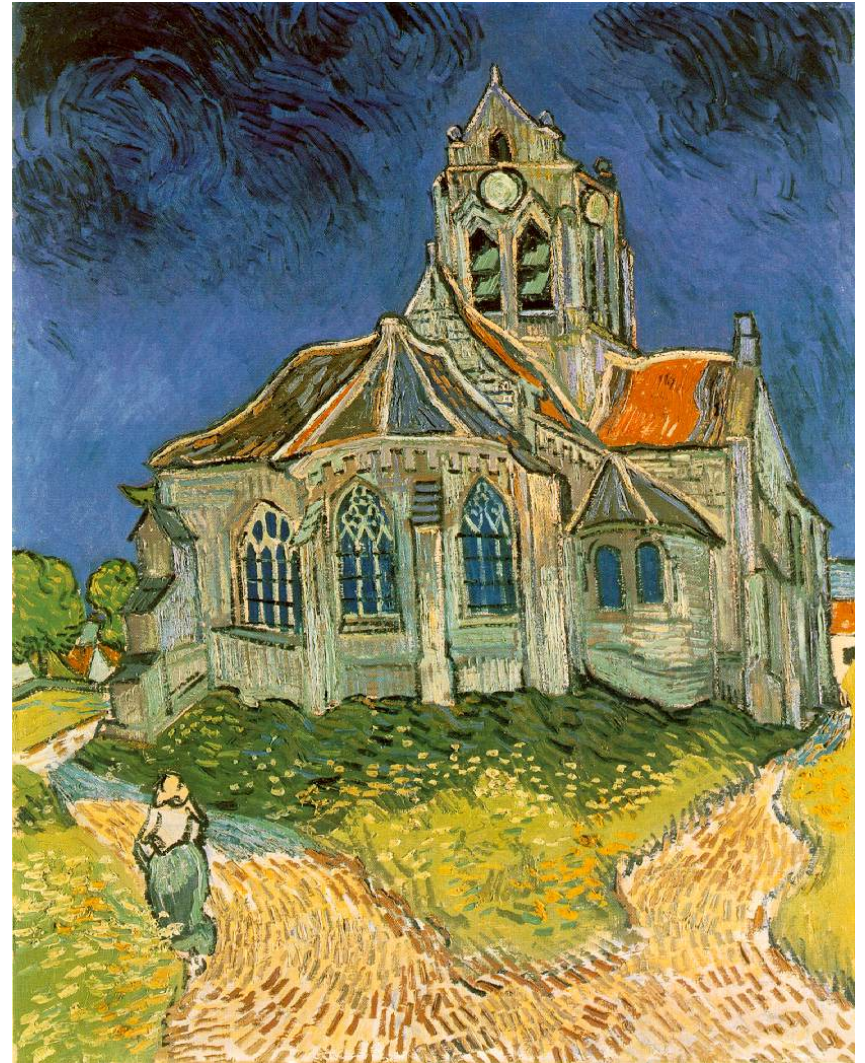
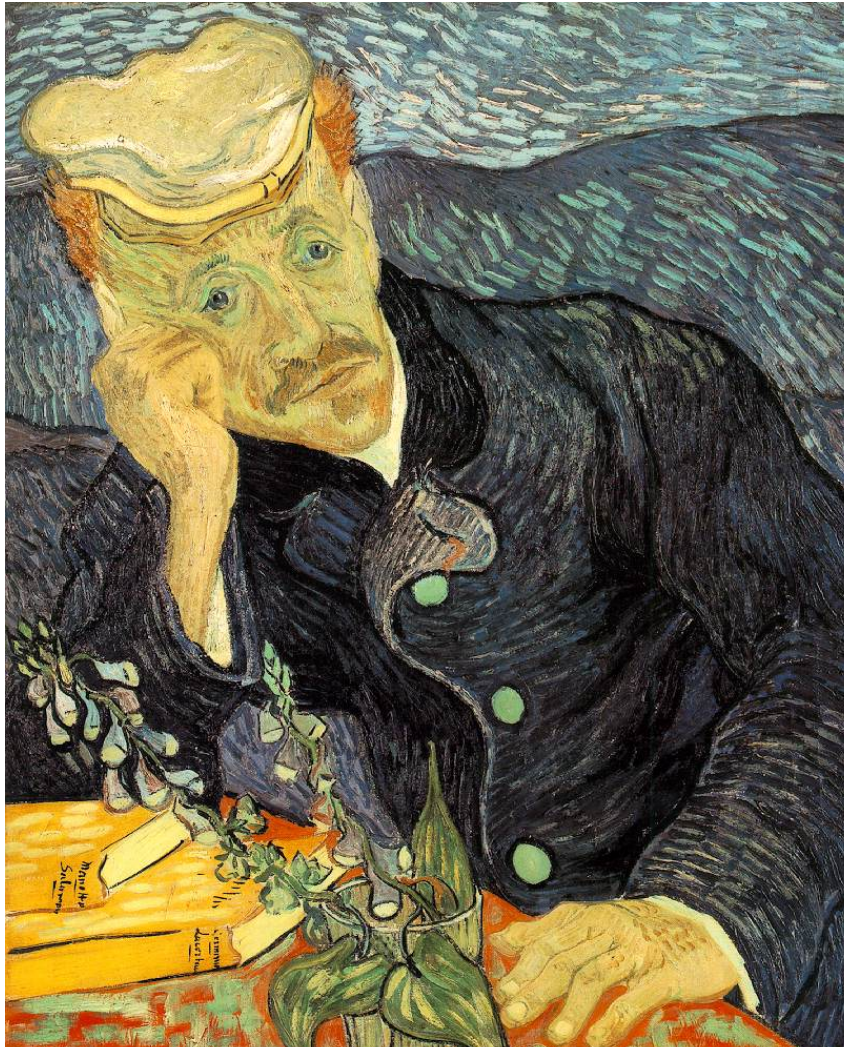
Les Natures Mortes





Vincent Van Gogh







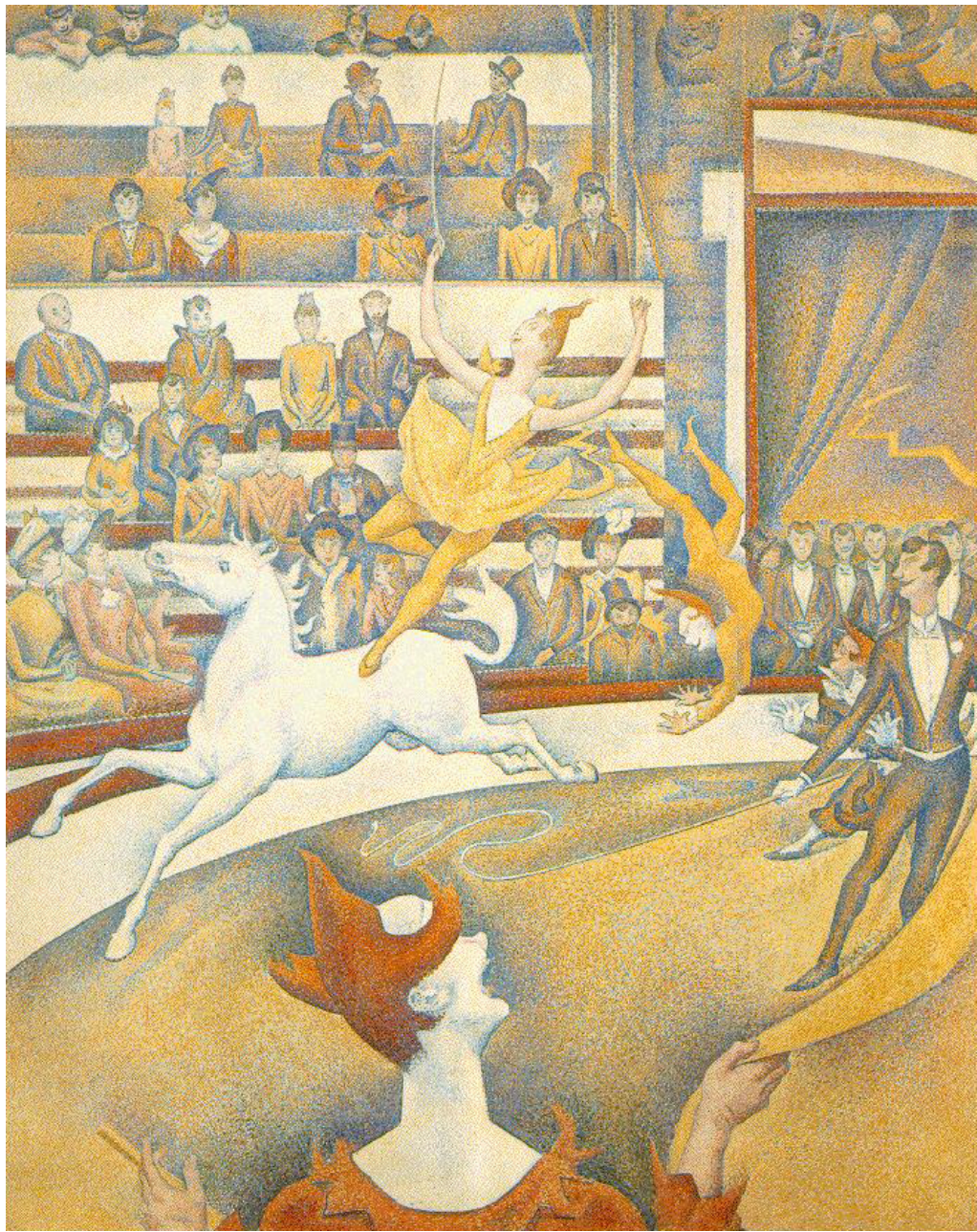




Georges Seurat 1859-1891

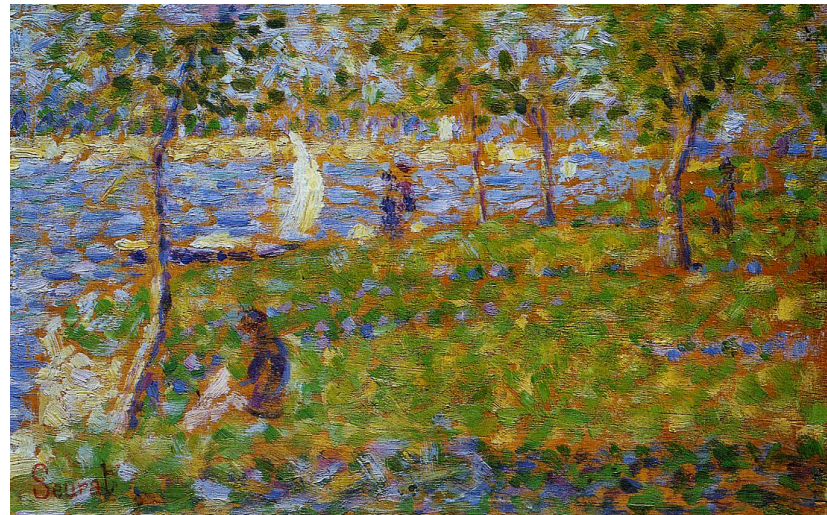
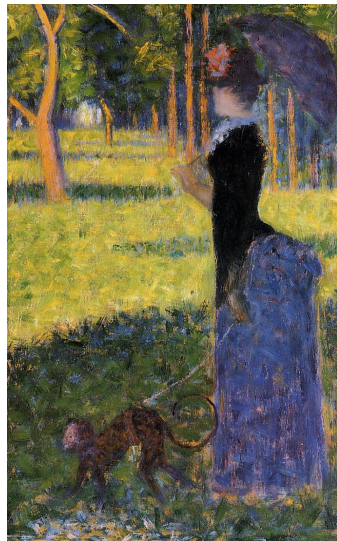
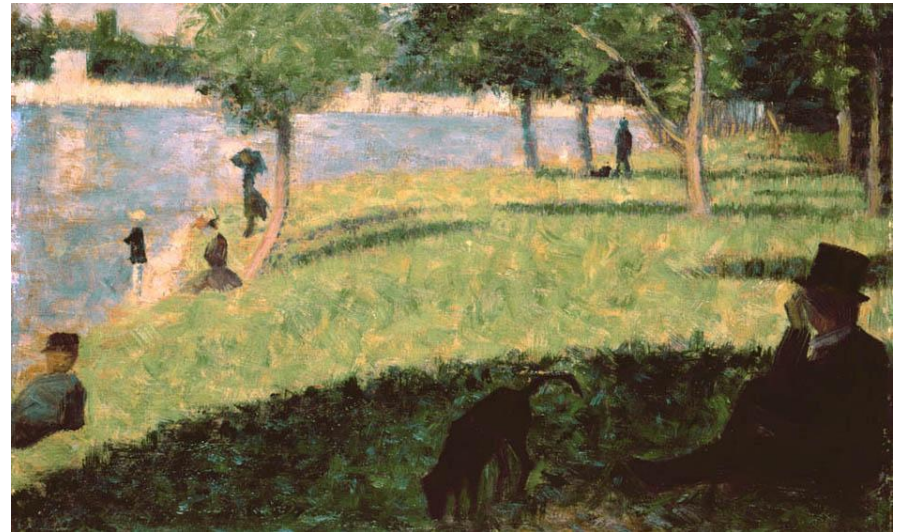
- Inventeur du pointillisme

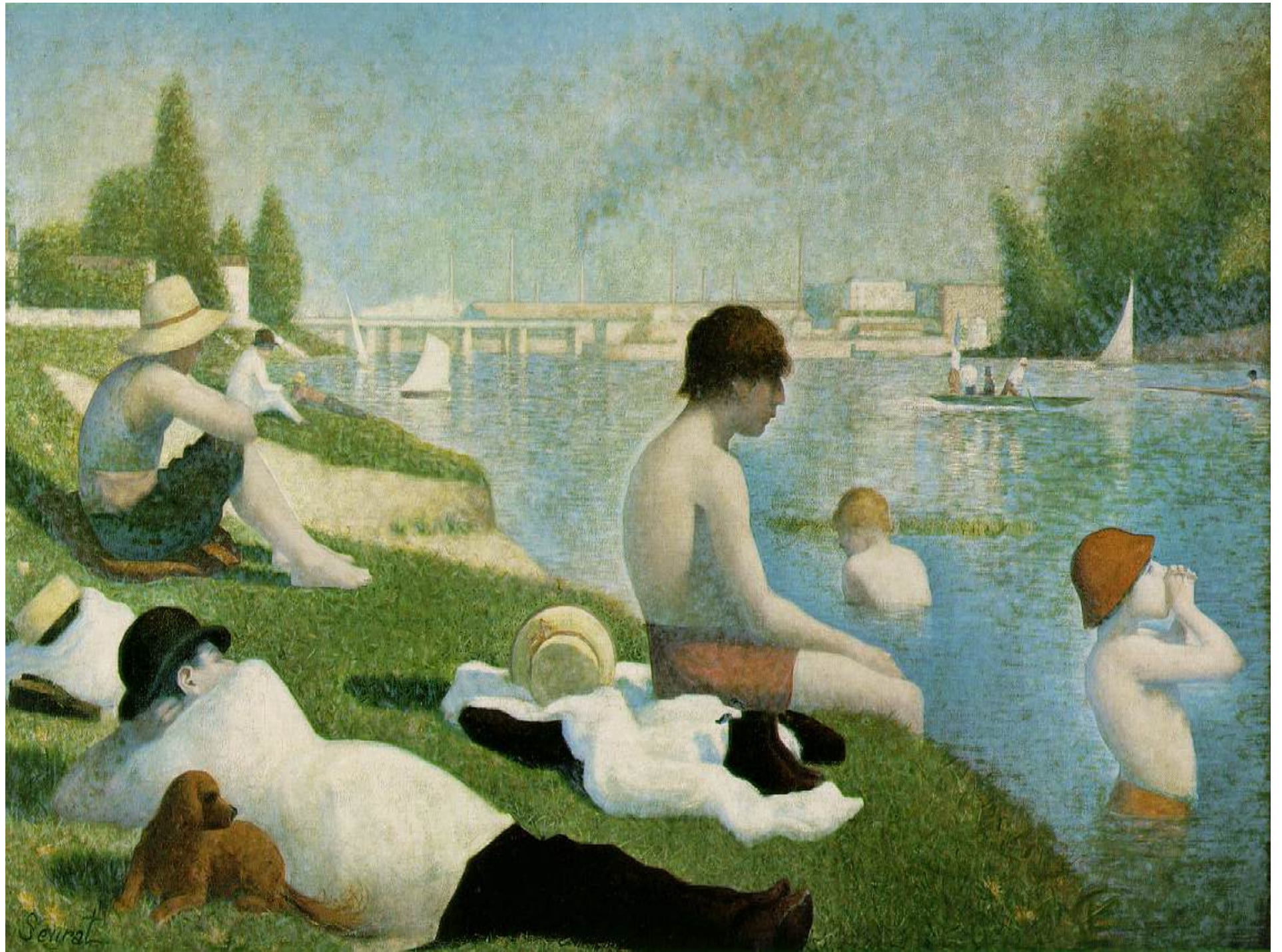






Etudes: un dimanche après-midi à l'Ile de la Grande Jatte (1884-86)



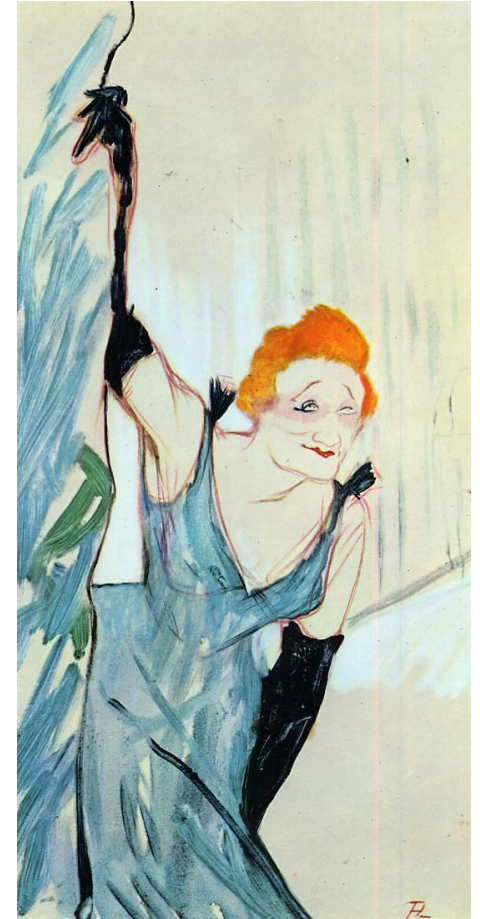


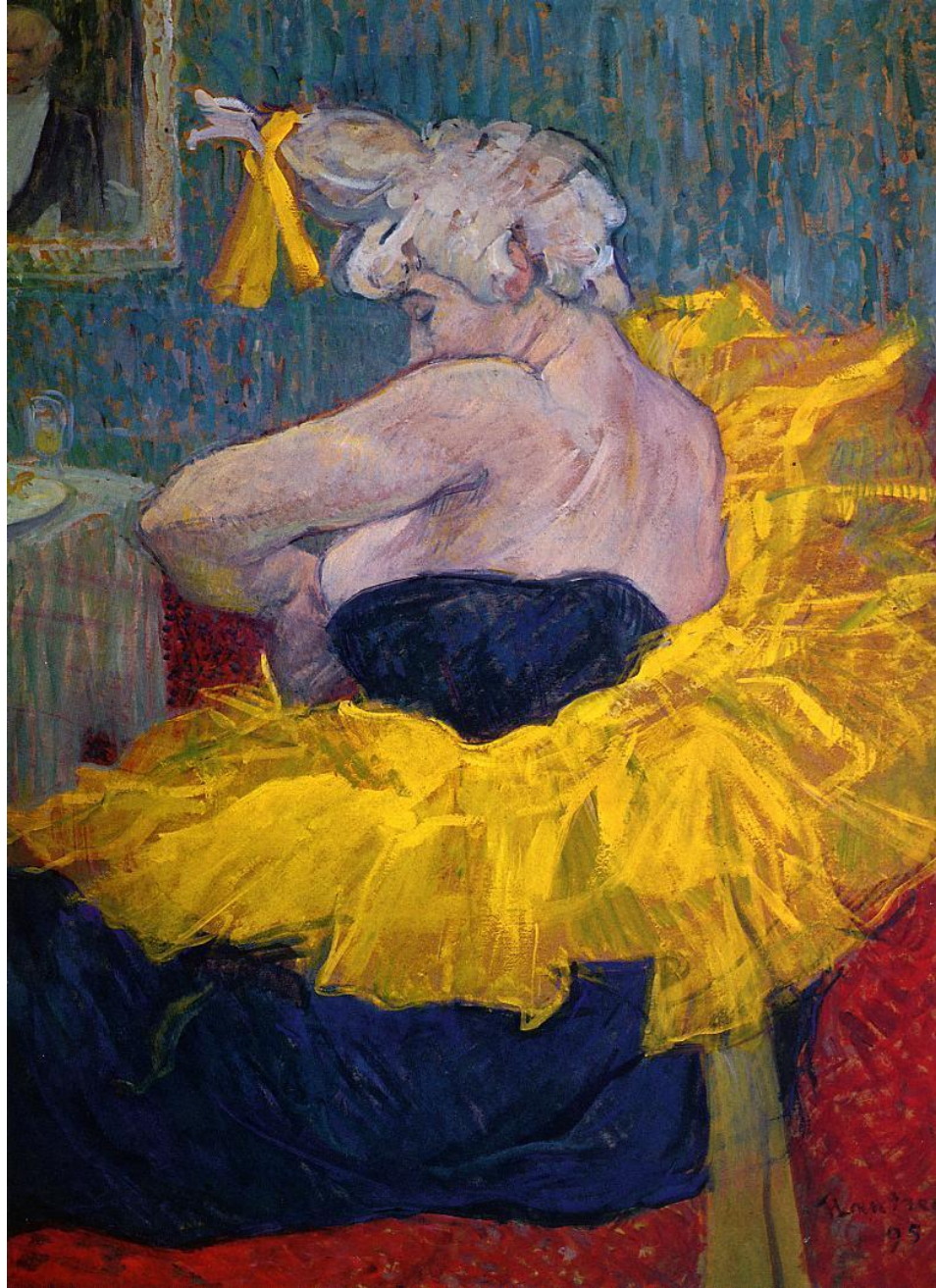
Henri de Toulouse-Lautrec 1864-1901

- Peintre de la vie nocturne de Paris
- l'affiche moderne









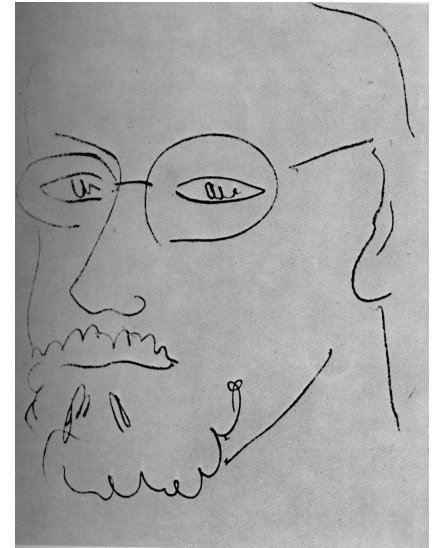
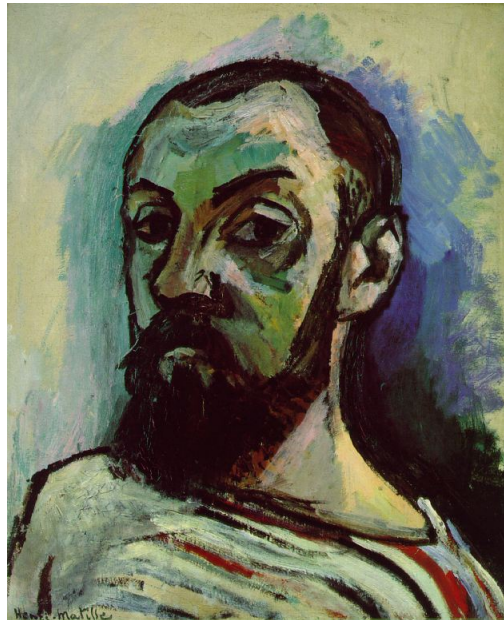


HENRI MATISSE
1869-1954

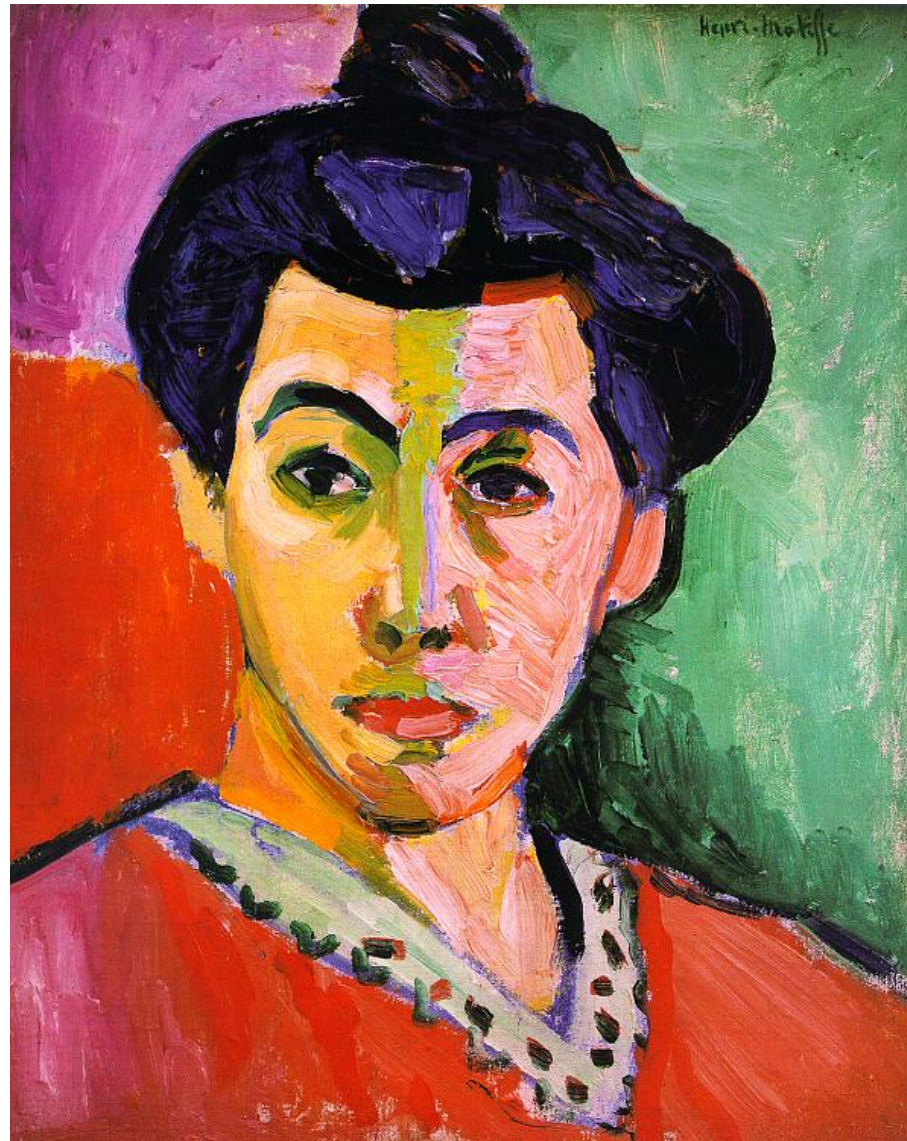
LE FAUVISME

ET MATISSE

Auto-portraits



Matisse peint par Picasso



**Madame
Matisse**

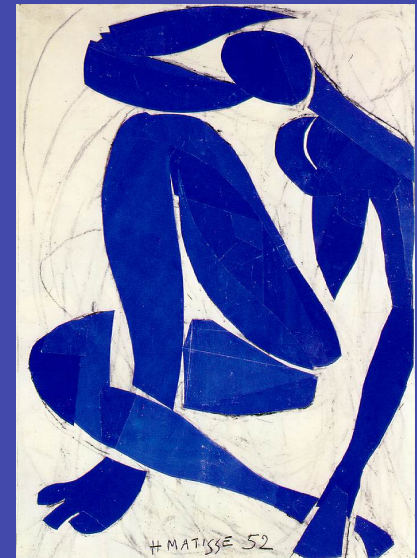








gouaches découpées





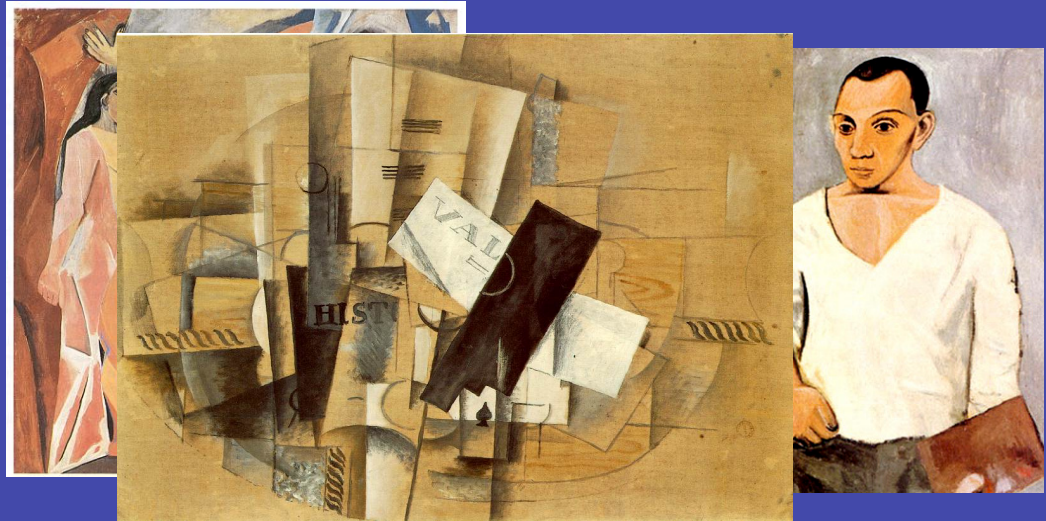




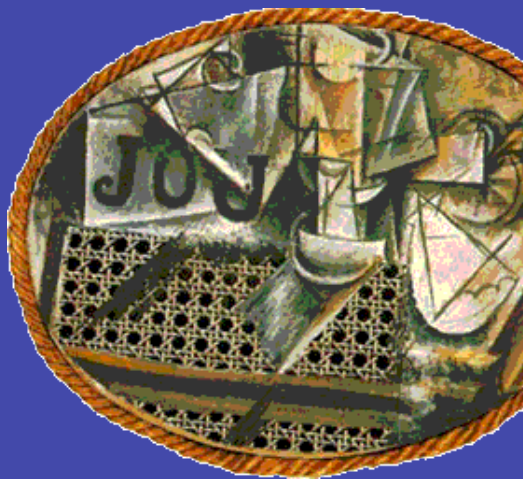


LES VITRAUX

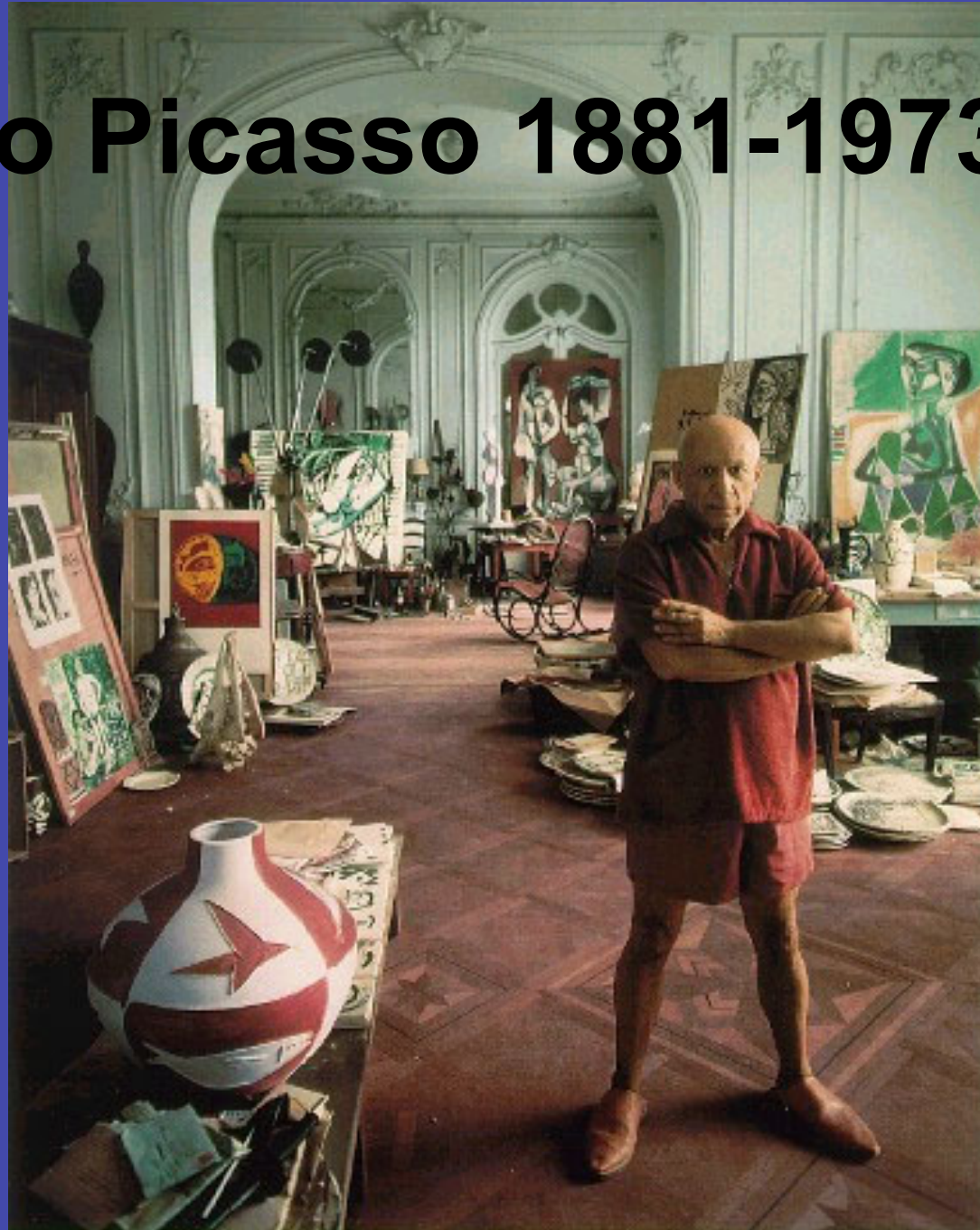




LE CUBISME



Pablo Picasso 1881-1973

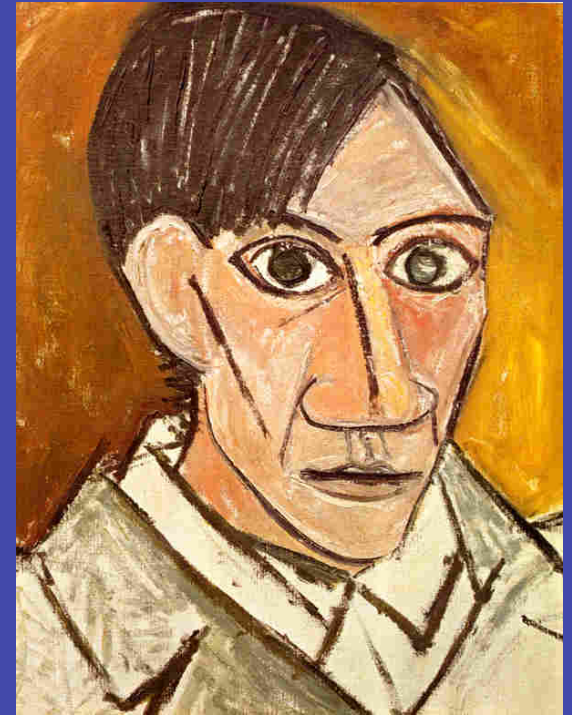


Auto-portraits



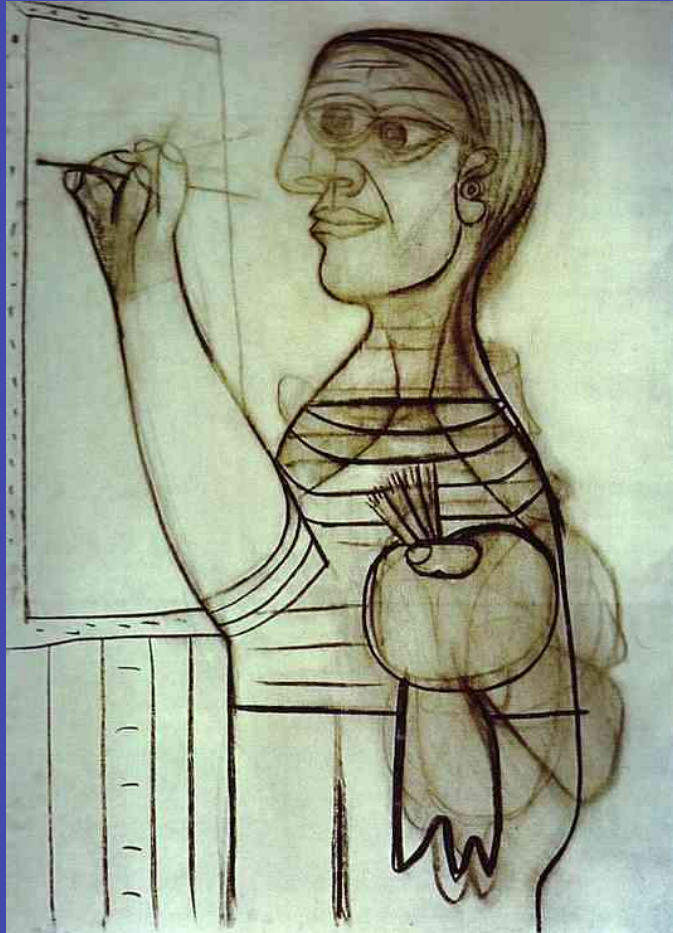
1896

1901

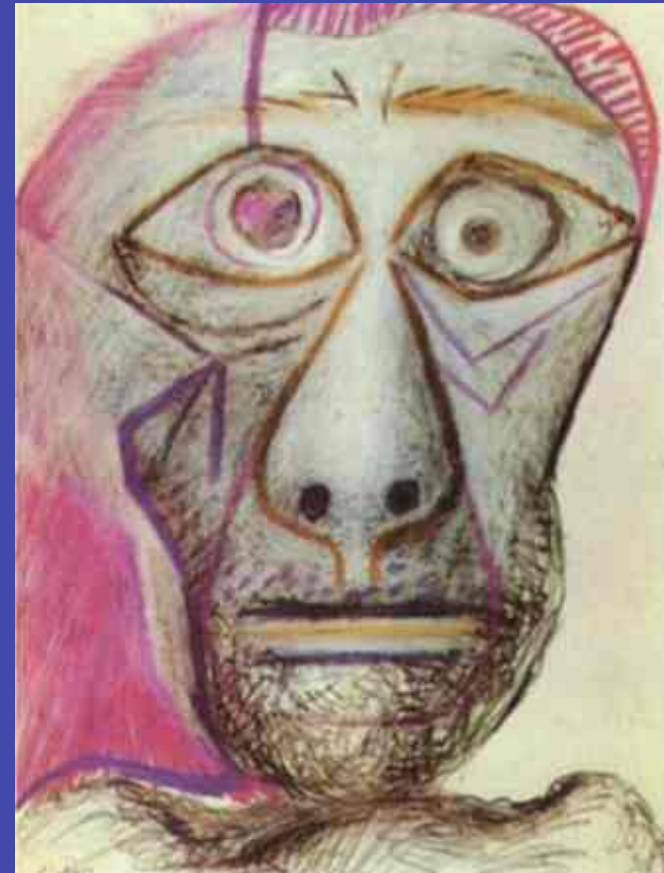


1907

Auto-portraits



• 1938



1972

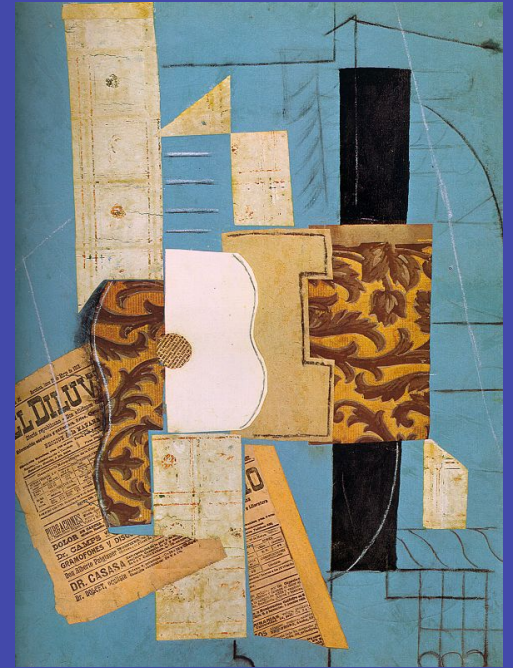
Les Demoiselles d'Avignon 1907



Trois Femmes 1908 La Paysanne



Picasso



GUERNICA

La toile entière est **endeuillée**. Le noir et le blanc évoquent la mort.



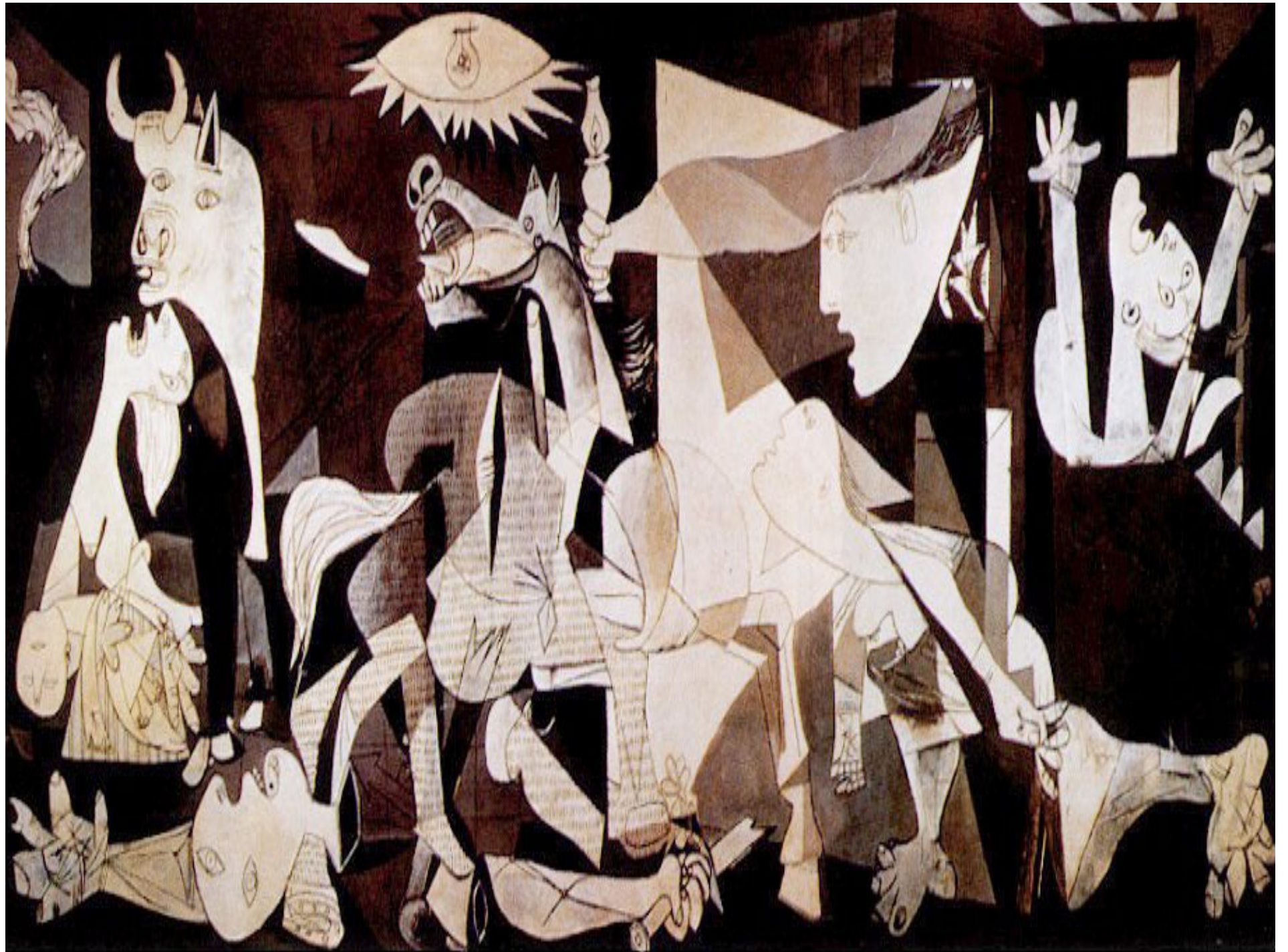
Le 1er Mai 1937, des bombardiers nazis appelés par Franco ont détruit la petite ville basque de Guernica. Le bombardement a duré 4 heures **anéantissant** impitoyablement la ville et ses **alentours** dans un rayon de 10 kilomètres. Le **bilan** était terrible: 1600 morts. Des milliers de blessés et de sans-abris.

endeuillé-griefstricken **anéantir-lay to waste**
alentours-surrounding areas **le bilan-toll**



- **PICASSO FACE A CET EVENEMENT**
- *<La guerre d'Espagne est la bataille de la réaction contre le peuple, contre la liberté. Toute ma vie d'artiste n'a été qu'une lutte continuelle contre la réaction et la mort de l'art. Dans le panneau auquel je travaille et que j'appellerai "Guernica" et dans toutes mes oeuvres récentes, j'exprime clairement mon horreur de la caste militaire qui a fait sombrer l'Espagne dans un océan de douleur et de mort.>*
- Picasso prend immédiatement parti contre le général Franco et se range aux côtés des Républicains dès 1936. Bouleversé, choqué, Picasso jette sa colère sur une toile de 8 mètres de long et 3 mètres 50 de large. Les éléments symboliques apparaissent dès les premières esquisses: le taureau, le cheval, la porteuse de lumière: le taureau exprime la brutalité, le cheval le peuple

la lutte-struggle le panneau-panel sombrer-sink l'esquisse-sketch



Georges Braque 1882-1963

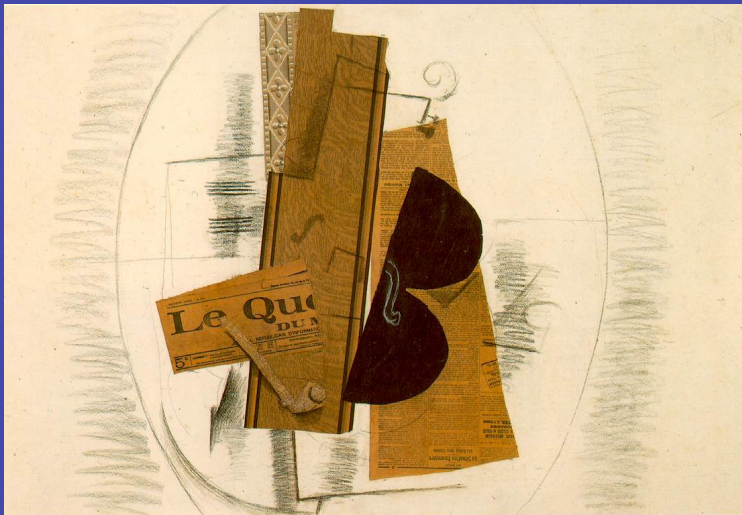
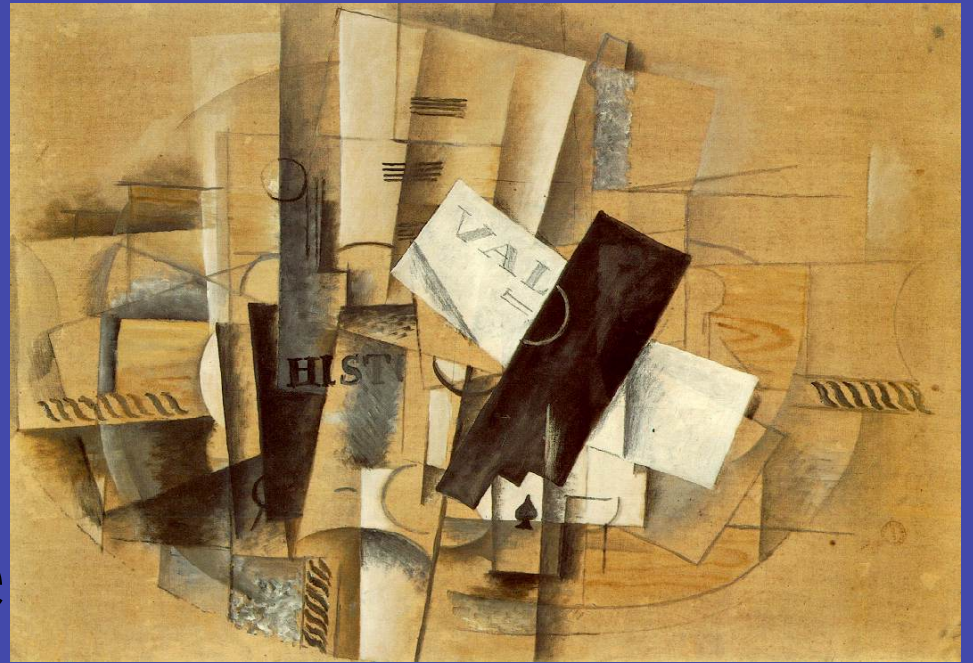


Braque





Braque



Le Surréalisme

=

la réalité

+

la rêve

Magritte painted the mysterious world of dreams, often juxtaposing ordinary objects in unusual ways.

The surrealists wanted their artwork to open our imagination and help us see the world in a new way. What is odd about this picture, entitled “L’Homme au chapeau melon”?

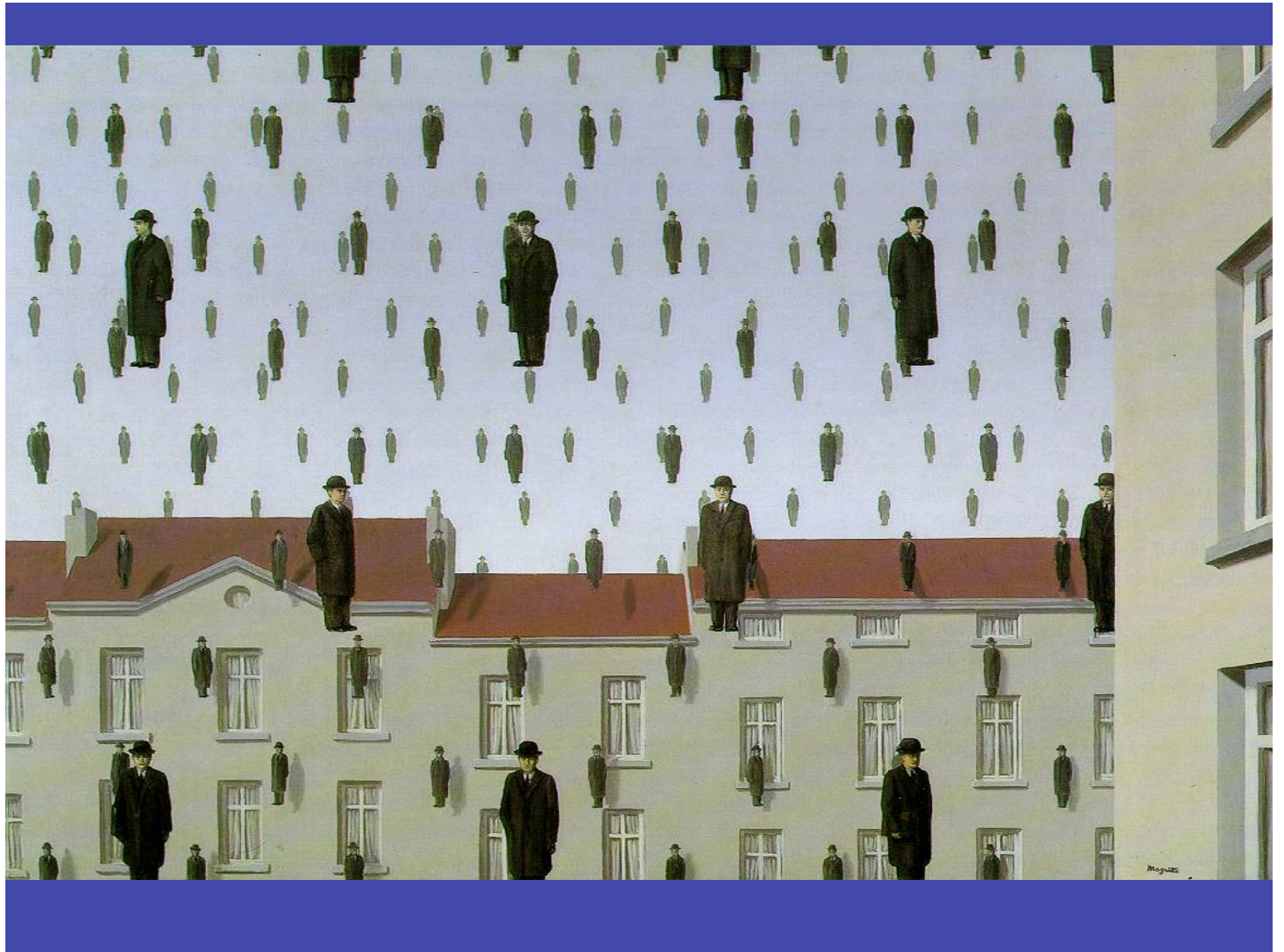


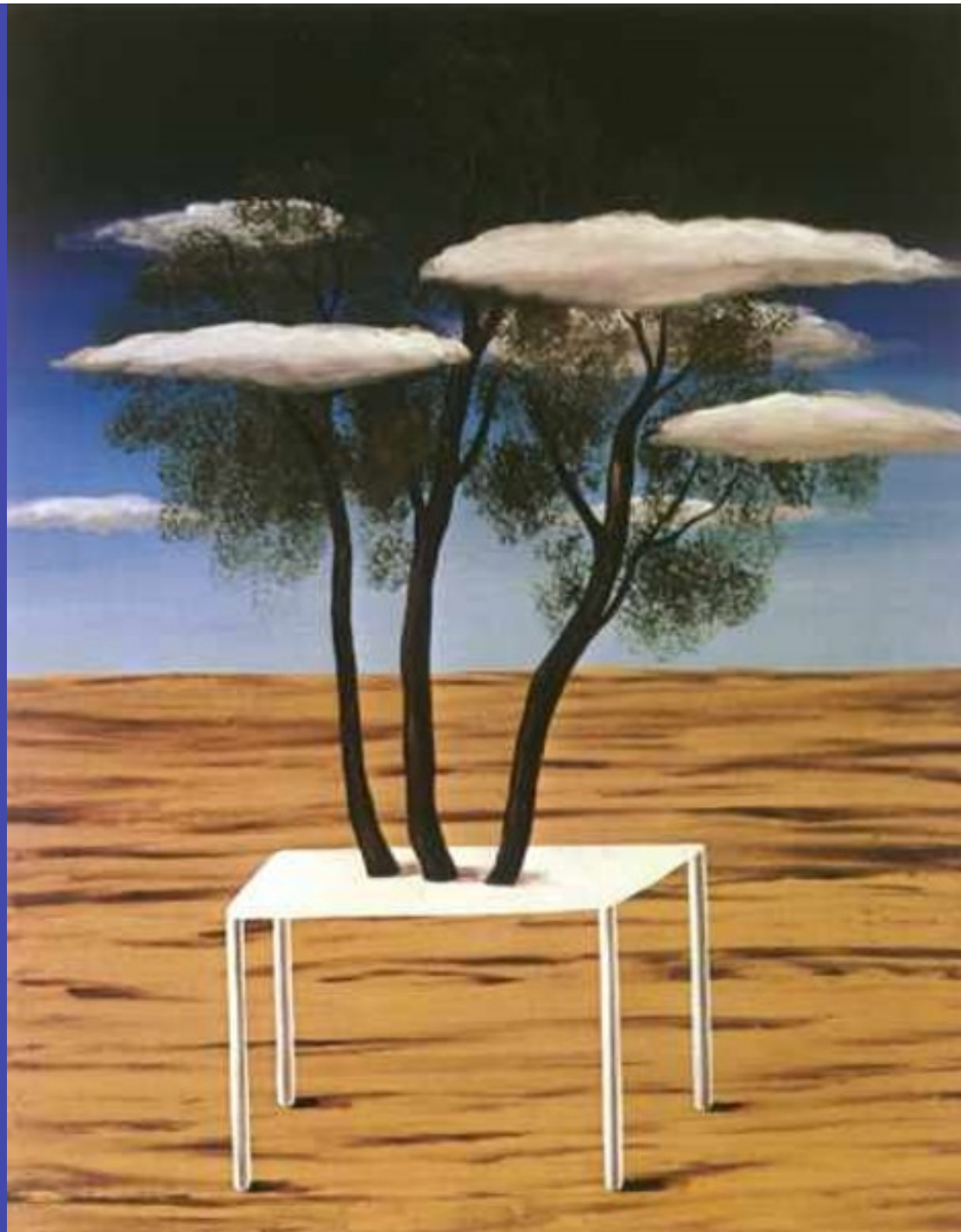


Sometimes Magritte played with words.



Ceci n'est pas une pipe.











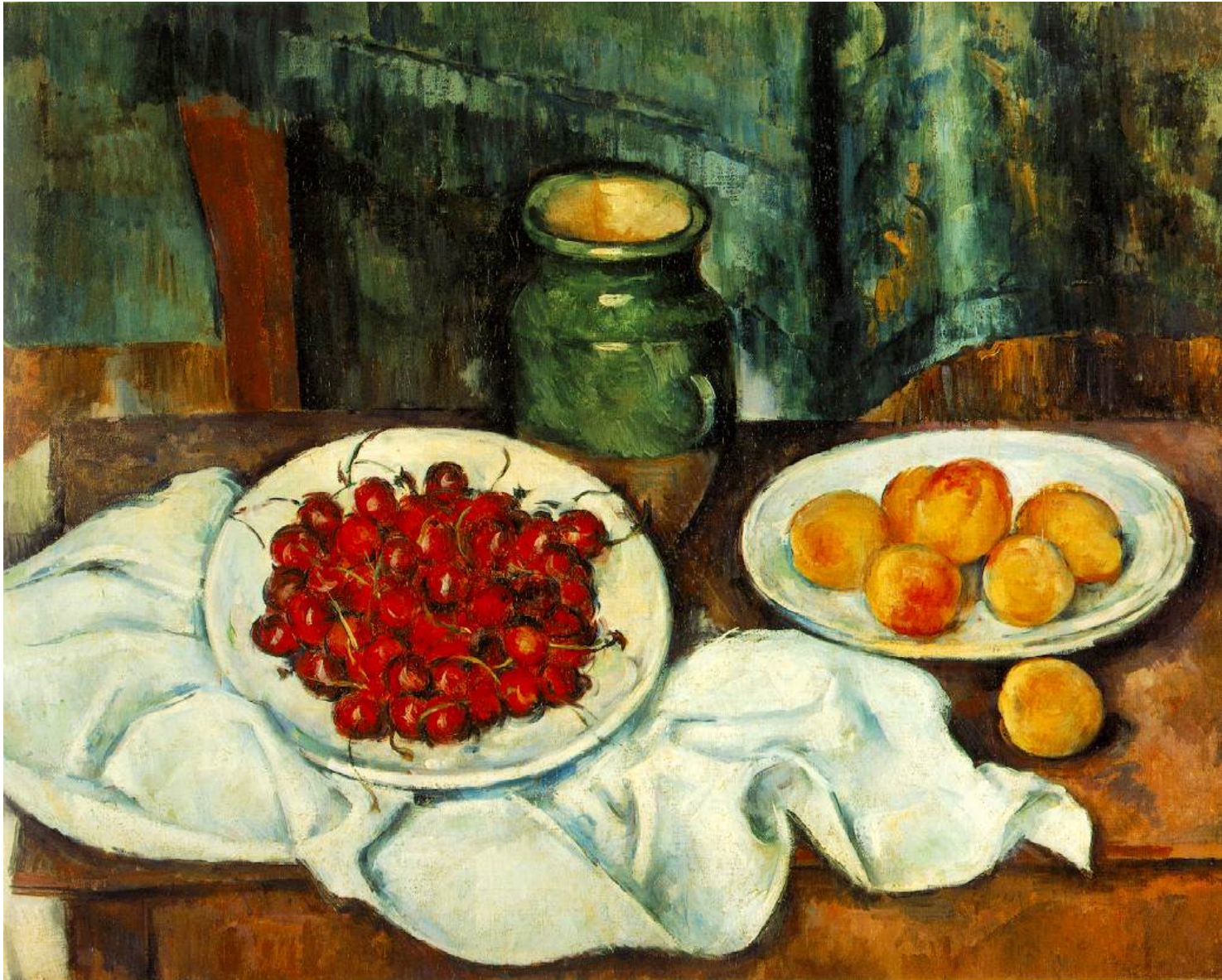
False Mirror

Here, Magritte changed the size of ordinary things.



Qui est l'artiste?

Cézanne



Toulouse-Lautrec



Seurat



Gauguin

